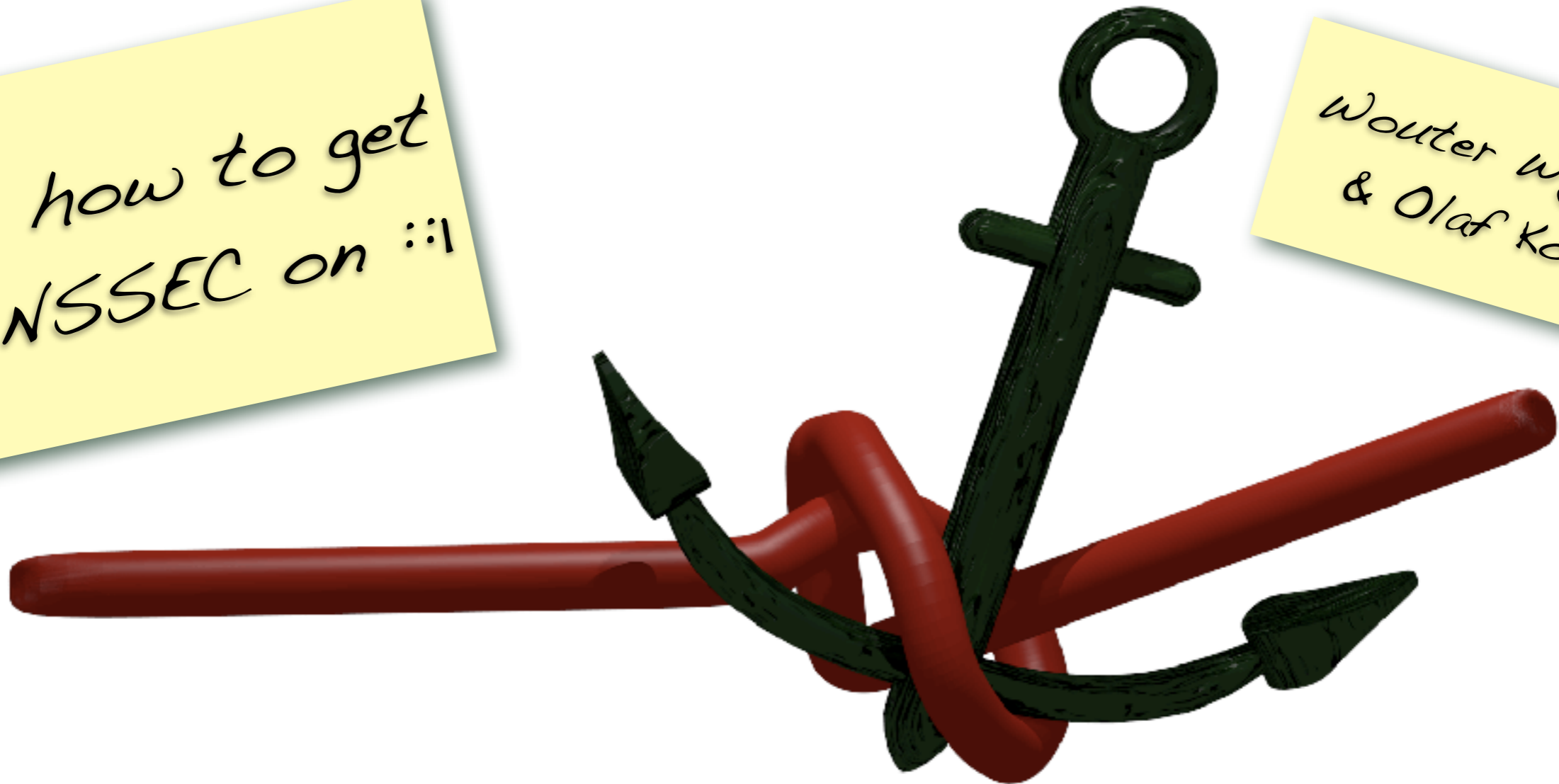


DNSSEC trigger

or how to get
DNSSEC on ::1

Wouter Wijngaards
& Olaf Kolkman



Executive Summary

How to get
DNSSEC to your
machine, without
too much of a
headache

`dnssec-trigger`

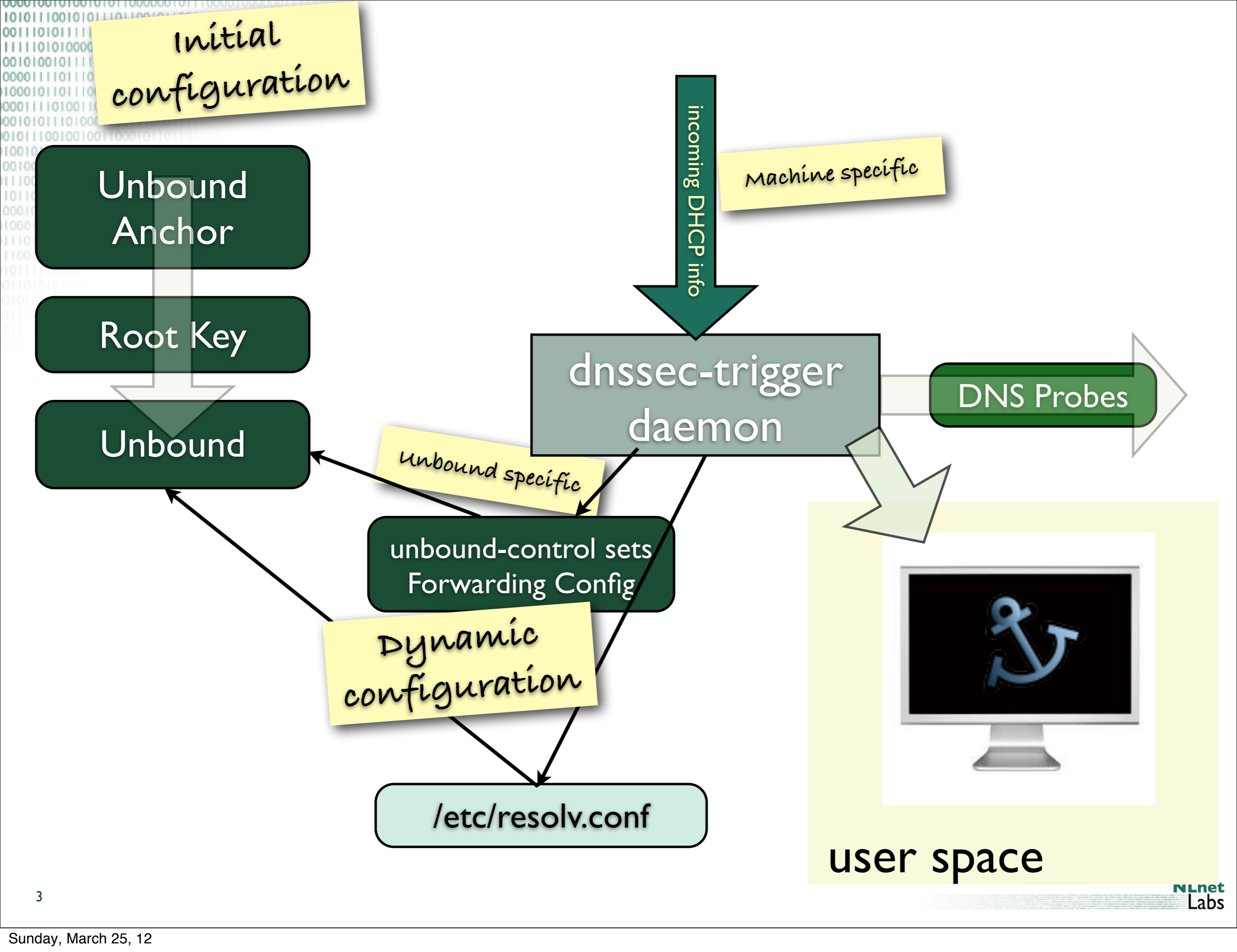
Run Unbound
Locally

Catch reconfigs
(DHCP etc)

Try to penetrate

If all fails call
user





PROBING STRATEGY

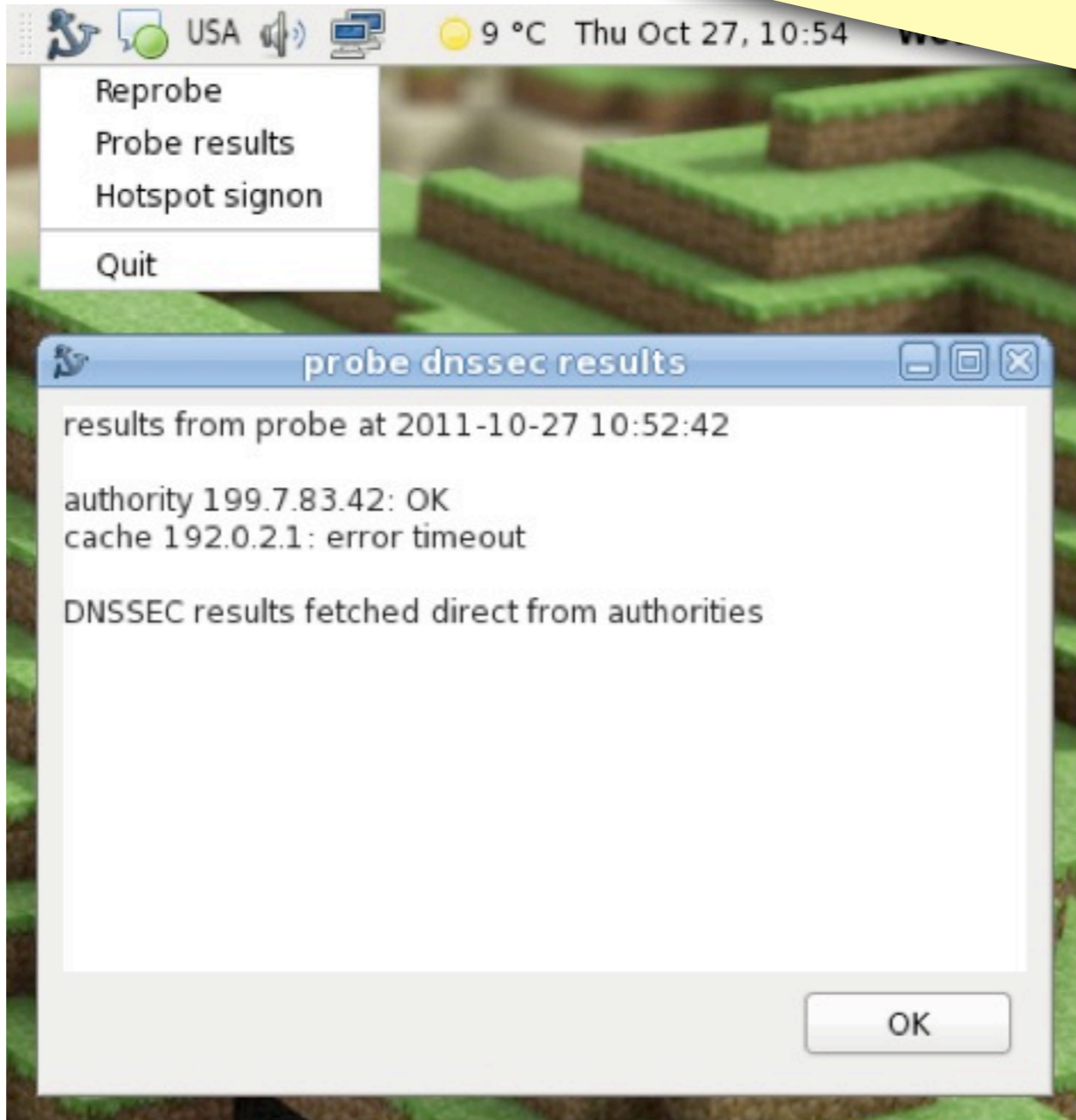
Use cache from
DHCP

All IPs in resolv.conf are
tried in parallel, first
response wins

Full resolver mode,
querying authority
servers directly

Port 80 and 443 to
an NLnet Labs
resolver

Normal operation



PROBE EXPECTATIONS

EDNS support

RRSIGs

DNSKEY and DS

Lengthy Packets
(>512)

Transparent Proxy
that is transparent
to DNSSEC

AND IT WILL PROBE AGAIN

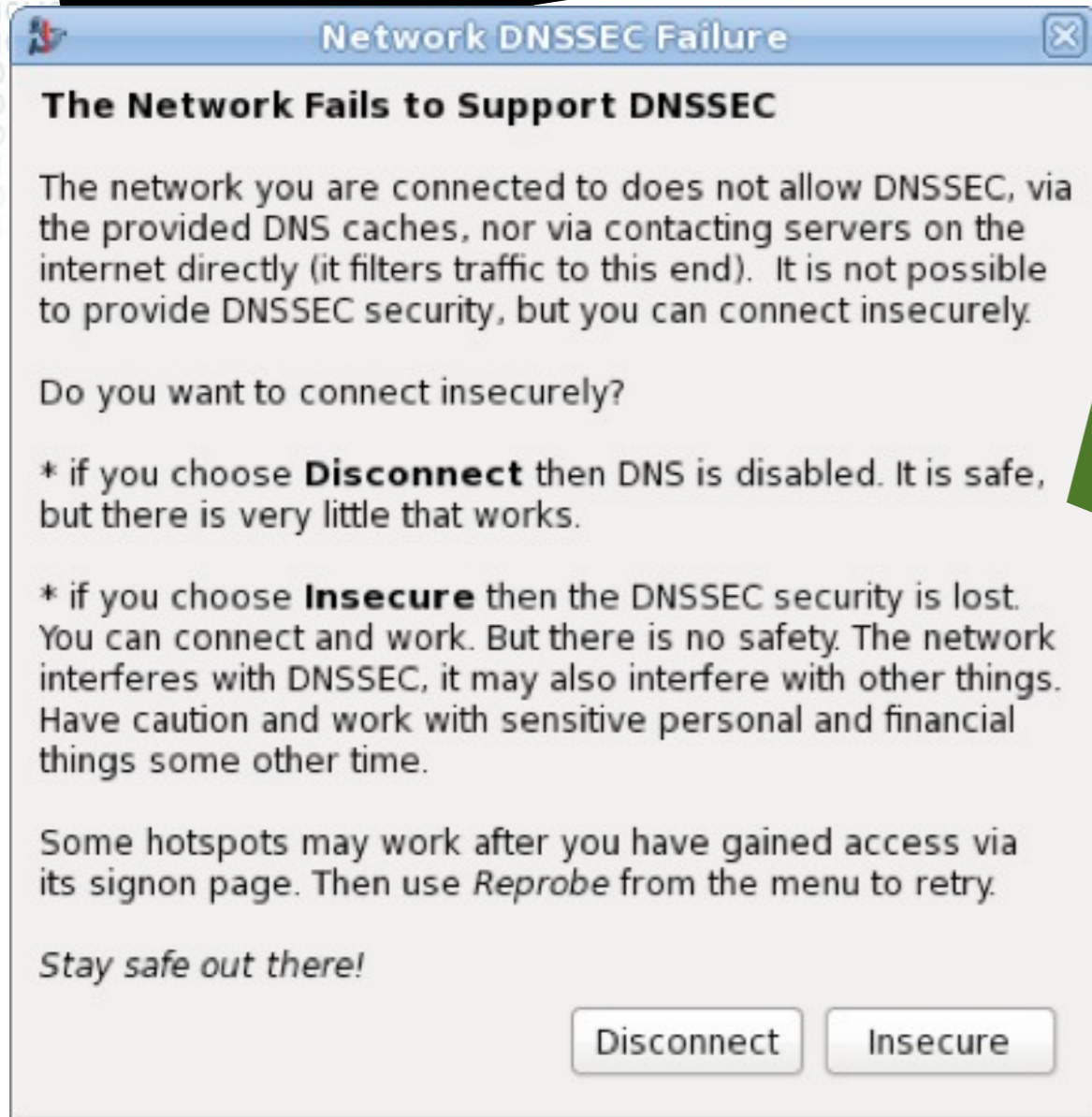
If insecure against
its will

exp backoff

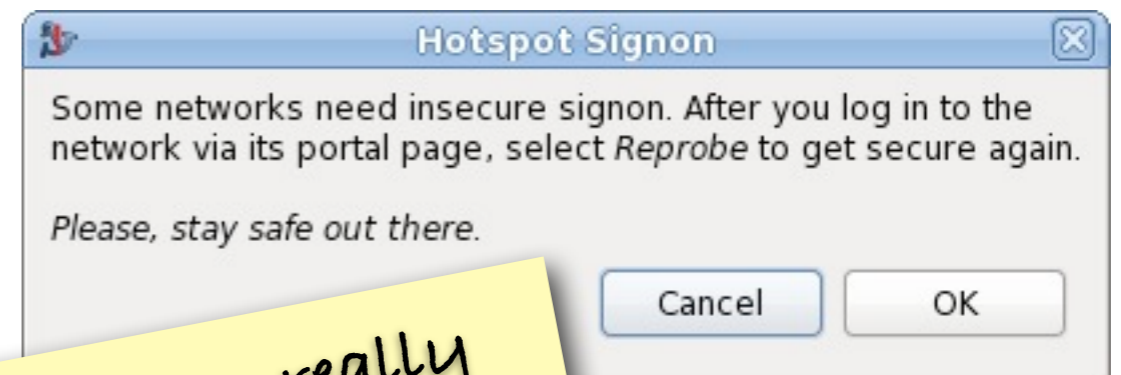
TROUBLE

No pop ups during
DNSSEC operations

Only during
probing
operation



Probe fails to detect
DNSSEC support,
pop-up dialog.



For when you really
have to turn off
DNSSEC validation



Network Manager
Netconfig

WSALookupService
(XP, Vista, 7)

scripts, ifconfig,
ipconfig



GTK2



Unity



Windows Native



Cocoa OS X



0.7 installer might fail;
ignore the failure message

**Designed for dynamic
environments (road
warriors)**

**But also used on 70 \$
routers**

<https://www.dnssec-deployment.org/index.php/2012/03/is-a-70-router-fast-enough-for-dnssec/>

10101100101011011001011001100101110111
00111010111111000111101101000111110111
111110101000111101010100100100111110111
0010100101110000111010000100000100001
00001110111010011101001011101100001111
100010110111001011010001000110010001
0001111010011011011100011111101001
00101011101000110011100011110111
0101110010010011000101101111111
10010100110000111000010011
00100101000111111001010101
1110001011110011101001
1011011011110111101111
00010110010100101001
11101101110011111111
110011000011111111
101111000011111111
01101010111111111111
11111111111111111111

WORK CURRENTLY IN PROGRESS

Auto detecting hot-spot sign-on

Software Update for Windows and OSX

RPM already available.



That's it folks

**Questions:
olaf@nlnetlabs.nl**

**or
wouter@nlnetlabs.nl**

If you use our software then consider to support
NLnet Labs' mission Financially:
<http://www.nlnetlabs.nl/labs/contributors/>